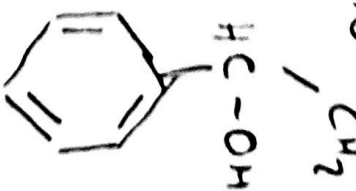
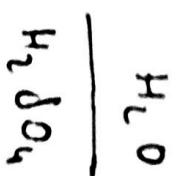
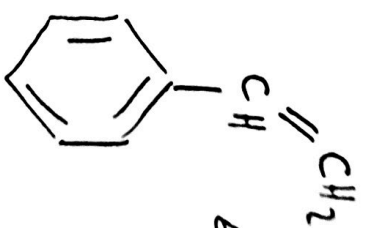
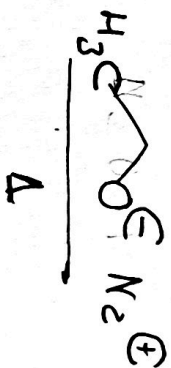
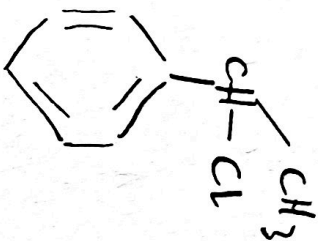
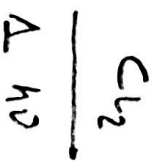
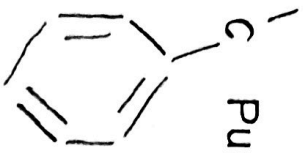


4.- Dibujar la estructura química de los compuestos que se obtienen al tratar consecutivamente etilbenceno con: i) cloro/luz y calor; ii) etóxido sódico y calor; iii) agua y ácido sulfúrico; iv) KMnO_4 ; v) CH_3MgI y posteriormente adición de agua.

Puntuación: 10 %



KMnO_4

