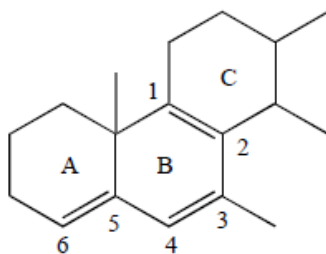


Diene Example #3:



Calc. λ_{\max} = 253 (choose diene with highest base value, pi bonds C₁₋₂ and C₃₋₄ are within same ring, so homoannular base should be selected) + 30 (C₅₋₆ pi bond is conjugated to diene and is therefore an extending diene) + 5 (C₅₋₆ is exocyclic to ring B) + 30 (5 + 5 + 5 + 5 + 5 = 30, for the alkyl or ring auxochromes at C₁, C₂, C₃, C₅, and C₆) = 318 nm

